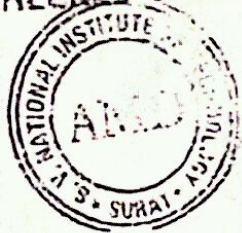
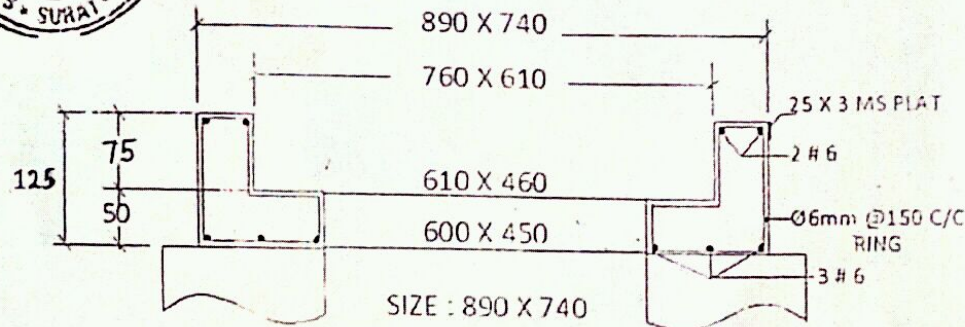


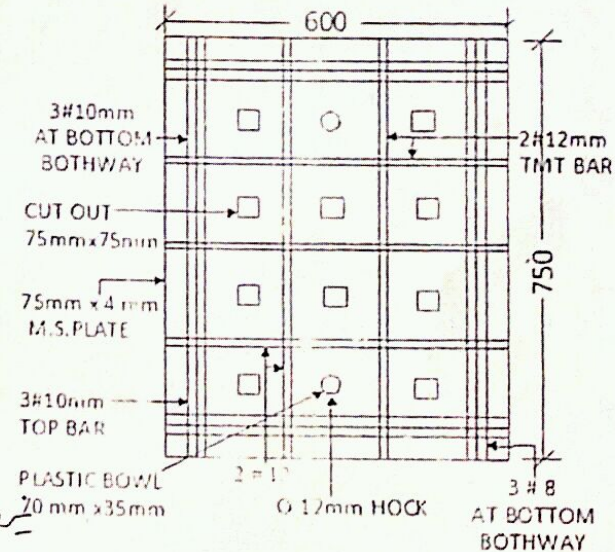
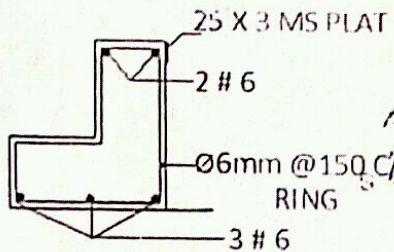
CHECKED & FOUND O.K.



R.C.C. PRECAST JALI
SIZE OF INLET CHAMBER 600 X 450 MM
OPENING - 600 X 450
SKETCH : FRAME & COVER



FRAME OF JALI



PLAN OF GRATING

ASSISTANT PROFESSOR
 Applied Mechanics Department
 V. National Institute of Technology
 Surat - 395 007.

PROFESSOR
 Applied Mechanics Department
 V. National Institute of Technology
 Surat - 395 007.

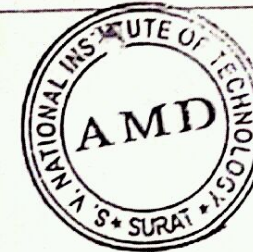
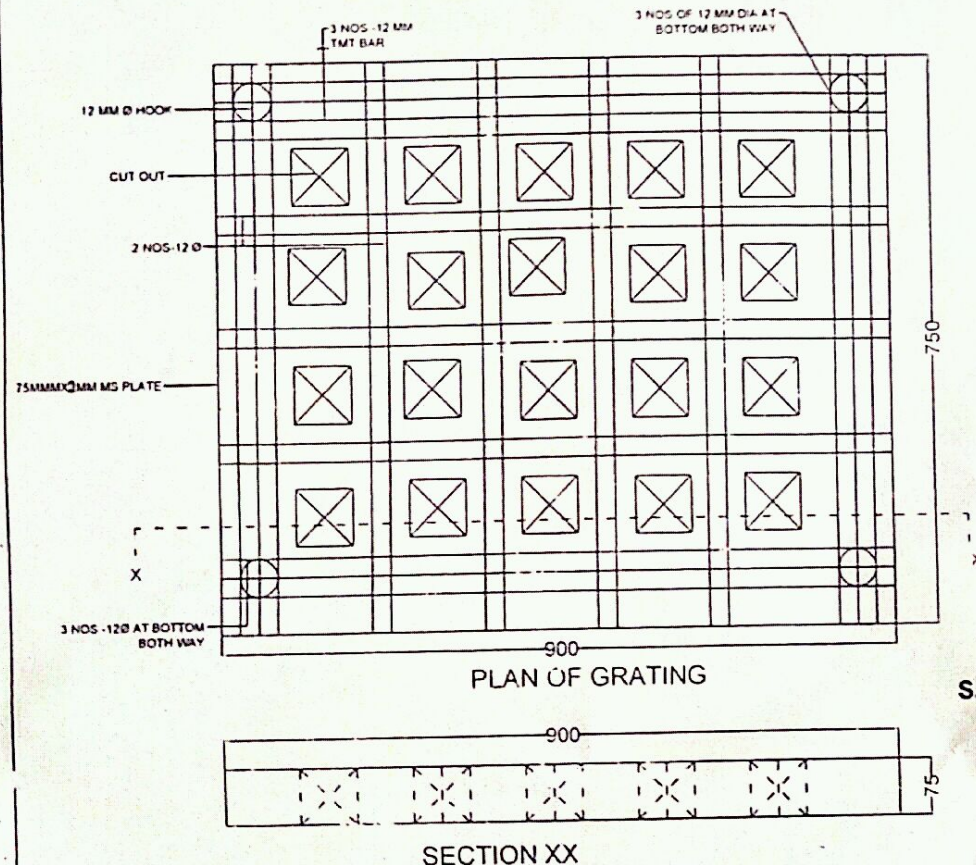
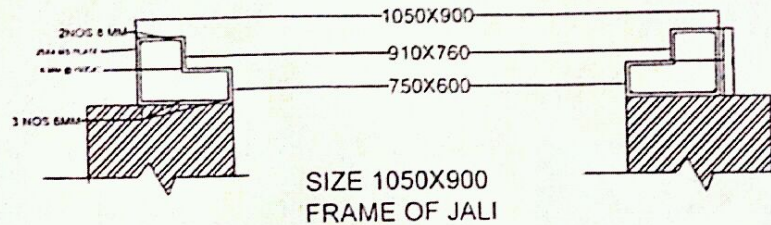
NOTE: ALL DIMENSION ARE IN MM.

REQUIREMENT

TECHNICAL SPECIFICATION	STEEL DESIGN	MIX DESIGN
TYPE OF PRODUCT : STEEL FIBER REINFORCED CONCRETE MODEL OF PRODUCT : RECTANGULAR PRODUCT DESCRIPTION : HEVY MEDIUM DUTY LOAD CAPACITY : DECIDED AFTER TESTING UNIT WEIGHT : 150Kg. (+/- 2/3 Kg.) FRAME CLEAR OPENING : 600 X 450 MM FRAME OVERALL SIZE : 890 X 740 MM FRAME THICKNESS : 125MM COVER OVERALL SIZE : 600 X 750 MM COVER THICKNESS : 75 MM	COVER 18 GAUGE PLATE (4MM) : AROUND 8MM TMT BAR : 4.000kg (+/- 200gm.) 10MM TMT BAR : 4.000kg (+/- 200gm.) ALL RODS ARE WELDED ON BOTH SIDE 12 MM ROUND BAR (HOOK) : 4 NOS. PLASTIC BOWL 70,MM X 35 MM : 4 NOS. FRAME 25 X 3 MS PLAT : 2.000 Kg (+/- 200gm.) 6 MM # COIL App. 4.000 kg (+/- 200gm.)	COVER CONCRETE GRADE : M-450 AS PER IS- 12592 MINIMUM CEMENT CONTENT : 450 Kg./M3 AS PER IS- 12592 CEMENT : GRADE - 53 WATER CEMENT RATIO : MAXIMUM WATER RATIO 0.45 X AS PER IS- 12592 STEEL FIBER : 50 MM TO 75 MM IN LENGHT 1.5 Kg. PER ONE BAG OF CEMENT AS PER CONCRETE MIX DESIGN

CDM / YAD
 8/10/20

R.C.C. PRECAST JALI SIZE OF INLET
CHAMBER 750 X 600 MM
SKETCH:- FRAME & COVER



TECHNICAL SPECIFICATION:-

TYPE OF PRODUCT	STEEL FIBER REINFORCE CONCRETE
LYOPEL OF PRODUCT	RECTANGULAR
PRODUCT DESCRIPTION	HEAVY MEDIUM DUTY
LOAD CAPACITY	15 METRIC TONE
UNIT WEIGHT	252 KG (+/-2/3KG)
FRAME CLEAR OPENING	750X600 MM
FRAME OVERALL SIZE	1050X900
COVER OVERALL SIZE	900X750
FRAME THICKNESS	150 MM
COVER THICKNESS	75 MM

STEEL DESIGN:

16 GAUGE PLATE	
12 MM TMT BAR	14.0 KG (+200GM)
ALL RODS ARFA WELDED ON BOTH SIDE	
12 MM ROUND BAR (HOOK)	4 NOS
PLASTIC BOWL 70MMX30MM	4 NOS

STEEL DESIGN

25X4 MS PLATE	2 200 KG(+/- 200GM)
6MM	6.5 KG (+/- 200GM)

MIX DESIGN:

CONCRETE GRADE	- M50 AS PER IS12592
MIN. CEMENT CONTENT	480 KG/M ³
CEMENT	GRADE- 53
WATER CEMENT RATIO	0.45 AS PER IS12592
STEEL FIBER	50 MM TO 75 MM IN LENGTH
	STEEL FIBER
	1.5 KG PER BAG OF CEMENT

ASSISTANT PROFESSOR
Applied Mechanics Department
S. V. National Institute of Technology
Surat - 395 007.

PROFESSOR
Applied Mechanics Department
S. V. National Institute of Technology
Surat - 395 007